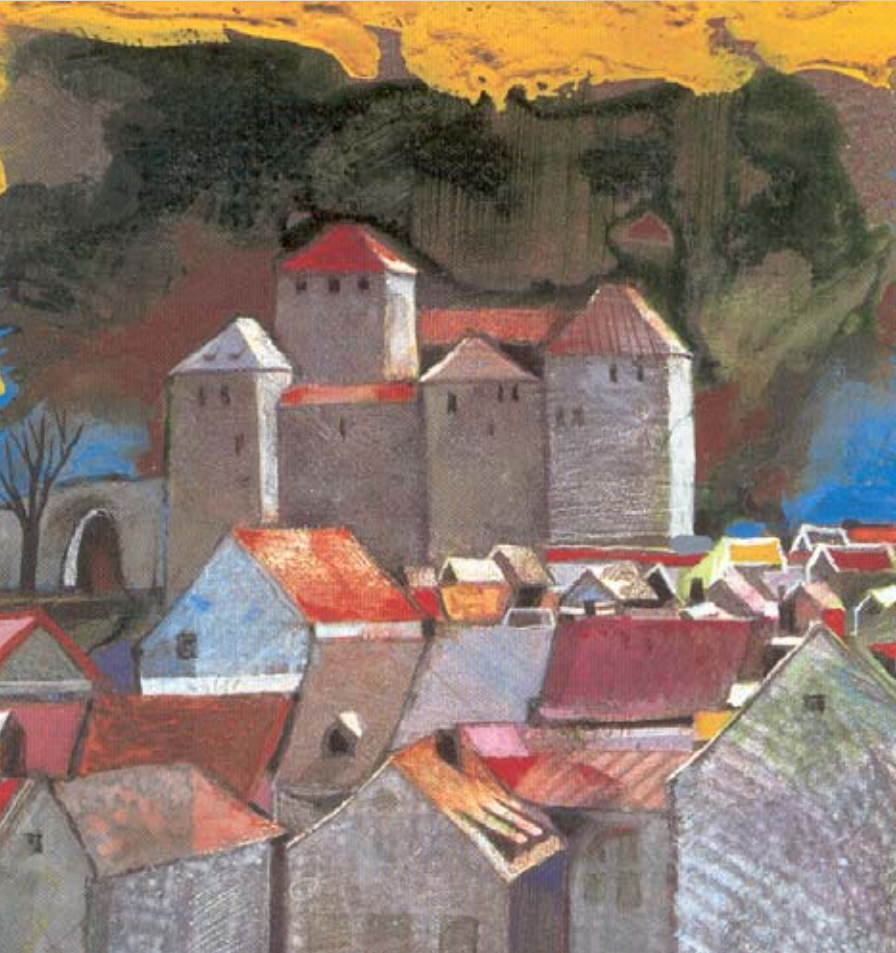


Joint Annual Meeting

Announcement



Swiss Society of Pathology
Austrian Society of Pathology

Feldkirch, Vorarlberg, November 4 – 6, 2010



SGPath / SSPath
Schweizerische Gesellschaft für Pathologie
Société Suisse de Pathologie
Società Svizzera di Patologia
Swiss Society of Pathology



European Society of Pathology



Crossing Borders to Discuss Hot Topics

Dear colleagues,

It is a great pleasure to host for the first time a Joint Meeting of the Austrian and Swiss Societies of Pathology.

Globalization is increasing at a pace never seen before and changing our ways of communication and scientific exchange. However, at the same time many organisations go to great lengths to foster regional co-operations and networks. To exchange our scientific knowledge and to learn from each other the Austrian and Swiss Societies of Pathology decided to cross borders and organize a Joint Annual Meeting here in Feldkirch, Austria. It is the 76th Annual Meeting for the Swiss Society of Pathology and the 24th Annual Fall Meeting for the Austrian Society of Pathology.

Pathology has lead to tremendous developments in medicine and is consistently creating newly emerging diagnostic opportunities and questions. In this Joint Meeting we will focus on these developments in the fields of **Dermatopathology**, **Gynecopathology** and **Pediatric Pathology**. In a cross-border approach we have put together a vivid extract of the most interesting news in these important diagnostic fields. There will also be plenty of time to discuss research data of all fields of pathology in oral and poster presentations. For our young colleagues the workshop **“Basics in Pathology”** will provide the opportunity to learn the **“Principles of Diagnostic Lung Pathology”** from leading experts. Finally, there will be a comprehensive common exhibition organized by our partners of the medical industry.

Feldkirch is a small medieval town at the geographic and cultural cross-roads between Austria and Switzerland and will warmly welcome you as our guests.

We cordially invite you to join us for the Annual Joint Meeting of Pathology in November 2010!

Prof. Dr. med. F. Offner, President of the Meeting

Prof. Dr. med. L. Mazzucchelli, President of the SGPath

Prof. Dr. med. H. Popper, President of the ÖGP

Organisation

Prof. Dr. med. F. Offner
Institut für Pathologie
Universitäres Lehrkrankenhaus Feldkirch
Carinagasse 47
A-6800 Feldkirch, Austria
pathologie@lkhf.at

Dr. med. U. Gruber-Mösenbacher
Secretary of the ÖGP
Institut für Pathologie
Universitäres Lehrkrankenhaus Feldkirch
Carinagasse 47
A-6800 Feldkirch, Austria
ulrike.gruber@lkhf.at

Scientific Advisory Board

PD Dr. med. K. Glatz
Institut für Pathologie
Universität Basel
Switzerland

Prof. Dr. med. S. Regauer
Institut für Pathologie
Medizinische Universität Graz
Austria

Prof. Dr. med. S. Lax
Institut für Pathologie
LKH-Graz West
Austria

Prof. Dr. med. G. Singer
Institut für Pathologie
Kantonsspital Baden
Switzerland

PD Dr. med. E. Bruder
Institut für Pathologie
Universität Basel
Switzerland

Dr. med. G. Amann
Institut für Pathologie
Medizinische Universität Wien
Austria

Presidents of the ÖGP and SGPath

Prof. Dr. med. L. Mazzucchelli
Istituto Cantonale Patologia
Locarno
Switzerland

Prof. Dr. med. H. Popper
Institut für Pathologie
Medizinische Universität Graz
Austria

List of Speakers and Chairs

Amann G., Vienna, Austria
Bierhoff E., Bonn, Germany
Bruder E., Basel, Switzerland
Bongiovanni M., Geneva, Switzerland
Coffin C.M., Nashville, USA
Cutz E., Toronto, Canada
De Krijger R., Rotterdam, Netherlands
Diebold J., Luzern, Switzerland
Diener P.A., St. Gallen, Switzerland
Dishop M.K., Houston, USA
Gruber-Mösenbacher U., Feldkirch, Austria
Glatz K., Basel, Switzerland
Gugger M., Bern, Switzerland
Herrington S., Dundee, United Kingdom
Horvat R., Vienna, Austria
Kapur R., Seattle, USA
Kerl K., Zurich, Switzerland
Kurman R., Baltimore, USA
Lax S., Graz, Austria
Massi D., Florence, Italy
Mentzel T., Friedrichshafen, Germany
Mihic D., Zurich, Switzerland
Moinfar F., Graz, Austria
Oligny L.L., Montreal, Canada
Paredes G., Friedrichshafen, Germany
Perlman E.J., Chicago, USA
Popper H., Graz, Austria
Ratschek M., Graz, Austria
Regauer S., Graz, Austria
Rougemont A.L., Geneva, Switzerland
Singer G., Baden, Switzerland
Zelger B., Innsbruck, Austria

Final Scientific Program

The final scientific programm will soon be available on-line via <http://www.pathology.at> or <http://www.sgpath.ch>

Conference Venue

Vorarlberger Landeskonservatorium
Reichenfeldgasse 9
A-6800 Feldkirch, Austria
www.vorarlbergerlandeskonservatorium.ac.at

The Vorarlberger Landeskonservatorium is located directly at the river ILL close to the centre of Feldkirch. See map number 7.



Feldkirch



- 1 Schattenburg
- 2 Katzenturm
- 3 Pulverturm
- 4 Wasserturm
- 5 Diebsturm
- 6 Zeughaus
- 7 Landeskonservatorium
- 8 Dom St. Nikolaus
- 9 St. Johanneskirche
- 10 Liebefrauenkirche
- 11 Rathaus
- 12 Churentor
- 13 Mühleitor
- 14 Palais Liechtenstein

Registration

Registration should preferentially be made on-line: <http://www.pathology.at>. However, it can also be performed by regular mail by fax or E-mail or on-site. In case you prefer not to register on-line please use the following contact information:

ÖGP-SGPath-Joint Annual Meeting 2010

Institut für Pathologie

Universitäres Lehrkrankenhaus Feldkirch

Carinagasse 47

A-6800 Feldkirch, Austria

Tel.: +43(0)5522 303 3400, Fax: +43(0)5522 303 7521

E-mail: pathologie@lkhf.at

DEADLINE FOR PRE-REGISTRATION: October 30, 2010

Registration Fees

GENERAL REGISTRATION

The general registration fee is required for admittance to the meeting. This fee allows you to attend lectures, oral presentations, poster sessions, and slide seminars. Coffee breaks and lunches are also included. It further includes the workshop "Principles of Diagnostic Lung Pathology" held for residents on Thursday morning.

Members of ÖGP or SGPath	Ordinary members	€ 120.–
	Extraordinary members	€ 120.–
	Retired members	€ 100.–
	Residents, Junior members	€ 100.–
Non members of ÖGP or SGPath	Residents	€ 100.–
	Students or Technicians	€ 80.–
	Other non-members	€ 140.–

Certification of resident, student or technician status by the institute director must be provided at the registration desk.

ON SITE REGISTRATION

On site registration is possible at the registration desk (general registration fee + € 30.-). No credit cards or EC cards can be accepted at the registration desk. Fees may also be paid in CHF. The prices in CHF will be fixed locally approximately according to the published exchange rates.

ONE DAY TICKETS

One day tickets may be purchased at the registration desk at a rate of € 80.- per day. For students or technicians the respective rate is € 50.-.

SLIDE SEMINAR (Saturday, without attendance to the meeting)

Members of SGPath and ÖGP	Free of charge
Others	€ 50.-

WORKSHOP - BASICS IN PATHOLOGY

Participants are requested to register for the meeting (see general registration). The workshop is limited to 50 participants who are accepted on a first come first serve basis. Participants should register for the workshop before September 10, 2010.

GALA DINNER (all inclusive)

Members of ÖGP, SGPath and Residents	€ 30.-
Others	€ 35.-

Bank Account - Payments

Payments should be made to the following account:

ÖGP-SGPath-Joint Meeting 2010

Prof. Dr. Felix Offner

Account Number: 12 491076 011

Hypo Landesbank Vorarlberg, BLZ 58000

IBAN: AT175800012491076011, BIC: HYPVAT2B

Refund Policy

Cancellations received before Friday, October 29, 2010 are subject to a € 25.- administrative and handling fee. No refunds will be made on cancellations received Friday, October 29, 2010 or later.

Certificate of attendance

Regularly registered participants will receive a certificate of attendance

CME Credits or CME/DFP Credits

Meeting: 4 credits per half day

Workshop - Basics in Pathology: 4 credits

Slide seminar: 8 credits

Submission of slide seminar diagnoses: 4 credits

Badges

Participants will receive a badge at the registration desk. It is the only official evidence of registration and should be worn at all times during the event.

Languages

All languages spoken in Austria and Switzerland are warmly welcomed. The official scientific language for all presentations of the meeting will be English.

Abstracts

Both societies, the ÖGP and SGPath invite you to participate actively in the conference. We look forward to receiving abstracts for consideration and inclusion in the programme as oral or poster presentations. The abstracts should not exceed 250 words and be written in English. They should be structured in the following four parts: Background, Methods, Results and Conclusion(s). All accepted abstracts will be published in "**Der Pathologe**".

DEADLINE FOR ABSTRACT SUBMISSION: September 10, 2010.

Detailed Instructions for abstract submission

1. Download the abstract submission form from <http://www.pathology.at> .
2. Structure the abstract as follows: Background, Methods, Results, Conclusion(s).
3. The abstract should not exceed 250 words (excluding title and affiliations).
4. The title should appear in capital letters.
5. For each author, provide last name followed by first and middle initials (Muster F., Holzer G.).
6. List affiliations after the author's list.
7. Full address with phone and fax numbers and E-mail address of the first author (=corresponding author) must be provided. The first author will receive all subsequent communications concerning the submitted abstract by E-mail only.
8. Select your preference (oral presentation or poster).
9. For abstracts accepted for presentation or poster, the first author must register for the meeting.
10. It is the responsibility of the first author to ascertain that all authors are aware of the content of the abstract before submission.
11. Submit the abstract to pathologie@lkhf.at as an attached document.

Acceptance notification

All abstracts received by the indicated deadline will be evaluated by the Scientific Advisory Board. Acceptance with technical details for presentation (oral or poster) will be communicated to the submitting author.

Oral presentations

Only Power Point presentations will be allowed at the sessions. Authors will deliver their presentation to the registration desk at least one hour before the beginning of the session, or the day before for early morning sessions. Oral presentations are 8 minutes long, plus 2 minutes for discussion.

Posters

Posters will be displayed in the congress venue close to the commercial exhibition. Authors are required to be available for questions and further information at their poster board during the poster sessions. The required dimensions are 150 cm (height) x 90 cm (length). At the top of the poster the following should be indicated: title, name(s) of the author(s) and affiliation(s). The responsible authors are requested to display the poster in the poster area on Thursday November 4 at 13:00 and to remove it on Friday November 5 no later than 18:30.

Poster Prize

A jury will select the best poster within the fields of Investigative and Clinical Pathology. Both prizes are worth € 400.–

Slide Seminar

The seminar is available on-line either via <http://pathorama.ch/vcollections/> or based on m-Scope® under <http://www.pathology.at>

Participants are requested to register for the meeting (see general registration).

Commercial exhibition

Manufacturers of technical equipment are invited to display their products at the exhibit. For information please contact the Exhibition Management: MAW - Medizinische Ausstellungs- und Werbegesellschaft
Freyung 6, A-1010 Vienna, Austria
Contact: Christine Mahatsek
Tel.: +43(1)536 63-34, Fax: +43(1)535 60 16
E-mail: christine.mahatsek@media.co.at

Internet café/message center

Computers will be available at the registration desk.

Speaker preview room

At the registration desk.

Insurance

The organizers bear no responsibility for untoward events related to participation in the meeting. Participants are advised to take out their own personal and travel insurance coverage.

Social events

Welcome Party with Jazz, Wine and Cheese

Thursday, November 4, 2010 at 19:15
Altes Hallenbad
Reichenfeldgasse 10, Feldkirch, Austria
(across the Landeskonservatorium)



Gala dinner

Friday, November 5, 2010 at 19:30
Restaurant Schlosswirtschaft Schattenburg
Burggasse 1, Feldkirch, Austria



Accommodations

The congress secretariat does not organize hotel accommodations.

Participants are kindly requested to book directly at:

<http://www.vorarlberg.nethotels.com/pathologiekongress10/search.htm?Rekursiv=Y>

or

<http://www.vorarlberg.nethotels.com/pathologiekongress10/english/search.htm?Rekursiv=Y>

Following hotels will provide special fees for participants to the meeting.

Accommodations	Single Room	Double Room (single use)	Double Room
Holiday Inn**** www.holiday-inn-feldkirch.com	–	€ 93.–	€ 147.–
Central Hotel Löwen**** www.central-hotel-loewen.at	–	€ 77.–	€ 114.–
Hotel Montfort**** www.montfort-dashotel.at	€ 85.–	€ 90.–	–
Hotel Bären www.hotel-baeren.at	€ 56.–	€ 67.–	–
Hotel Alpenrose**** www.hotel-alpenrose.ne	€ 71.–	€ 78.–	€ 124.–
Hotel Löwen Nofels*** www.hotel-loewen.at	€ 46.–	–	–
Pension Bad Nofels	€ 39.–	€ 47.–	€ 72.–
Hotel Schäfle*** www.schaefle.cc	€ 62.–	€ 80.–	€ 116.–
Zimmer im Zentrum www.zimmerimzentrum.at		€ 62.–	
Hoher Freschen**** www.freschen.at		€ 60.–	€ 92.–
Gasthof Mohren www.mohren.at		€ 61.–	€ 96.–

Contact

Institut für Pathologie
Universitäres Lehrkrankenhaus Feldkirch
Carinagasse 47, A-6800 Feldkirch, Austria

Tel:+43(0)5522 303 3400
E-mail: pathologie@lkhf.at
<http://www.pathology.at>

Thermo **Scientific** stellt vor:

Labelling & Tracking im histologischen Labor

Fehlerfreie Identifikation von Proben

- Durchgängiger und flüssigerer Arbeitsablauf
- Bedruckung von Kassetten und Objektträgern so einfach wie möglich
- Zeit sparen beim Sammeln von Kassetten und Objektträgern
- Kassetten und Objektträger ausschließlich nach Bedarf bedrucken
- Kosten senken durch geringeren Verbrauch von Materialien

PrintMate und SlideMate die Produkte der Wahl



3 Minuten Kaltdesinfektion des neuen

ThermoScientific Microm HM550

Mindern Sie das Risiko berufsbedingter Infektionen im Labor – mit der neuen Goldstandard Kaltdesinfektion

- Keine Unterbrechung Ihres Arbeitsablaufes
- Vollständige Desinfektion der gesamten Kryostatkammer
- Kein Gesundheitsrisiko durch das Desinfektionsmittel



Mehr zum Thema Kaltdesinfektion finden Sie unter www.kaltdesinfektion.at !